



**ERIKA CATELLANI**  
Freelance Illustrator

Illustration  
PORTFOLIO



DINOSAURS AND FRIENDS.

DIGITAL ILLUSTRATIONS FOR  
POSTCARDS AND BUSINESS CARDS.





FRY  
KAT

"NEL BOSCO"  
(INTO THE WOODS)

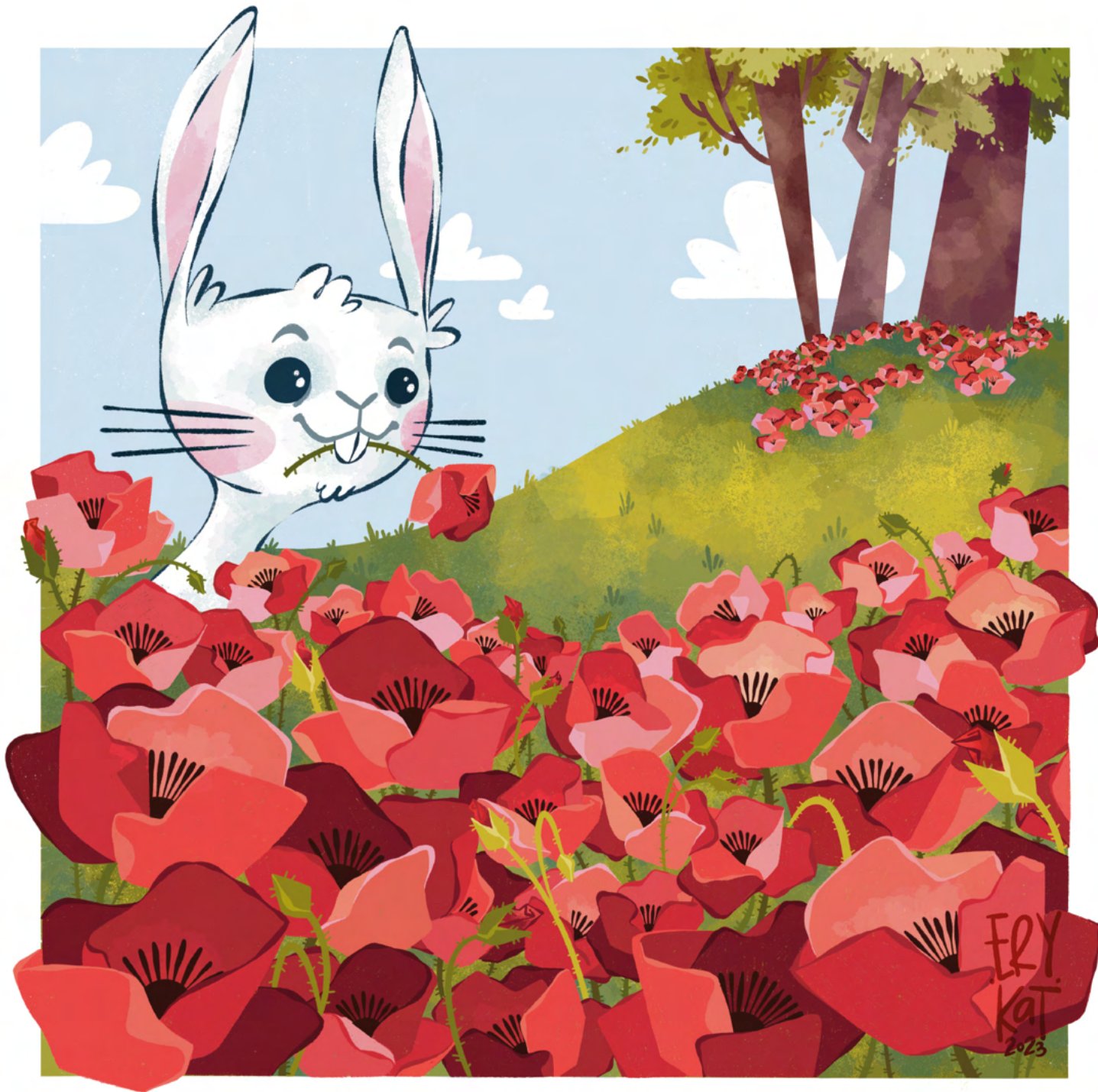
DIGITAL ILLUSTRATIONS MADE FOR  
THE 2024 CALENDAR.

THESE ILLUSTRATIONS, THROUGH THE  
PASSING OF THE MONTHS, TELL THE  
ADVENTURES OF A GROUP OF ANIMAL  
FRIENDS, INSIDE THE WOODS.



FLY  
KAT  
2023











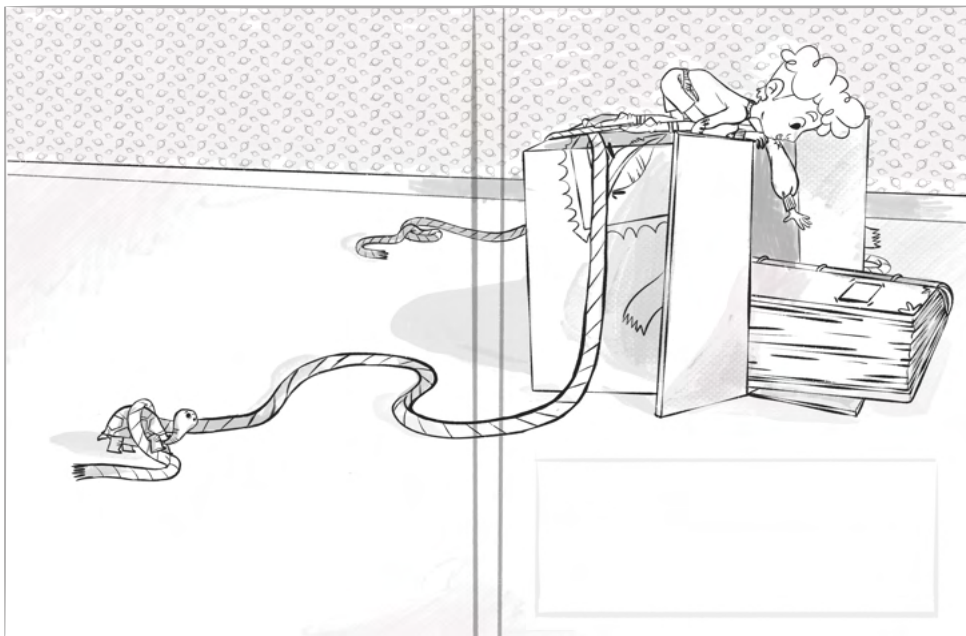
Mouse



owl

**CHARACTER DESIGN**  
OWL AND MOUSE





DIGITAL ILLUSTRATIONS AND STORYBOARD  
MADE FOR A CONTEST (GRIBAUDO).

THIS STORY TALKS ABOUT THE DELIVERY OF A  
MYSTERIOUS PACKAGE CONTAINING A GIAN BOOK.  
CHILDREN WILL DISCOVER THAT READING IS A  
FANTASTIC WAY TO DEVELOP THEIR IMAGINATION  
AND GROW!







ERY  
Kai  
2023











## VALENTINE'S DAY GREETING CARDS

DIGITAL ILLUSTRATIONS MADE FOR  
VALENTINE' DAY.



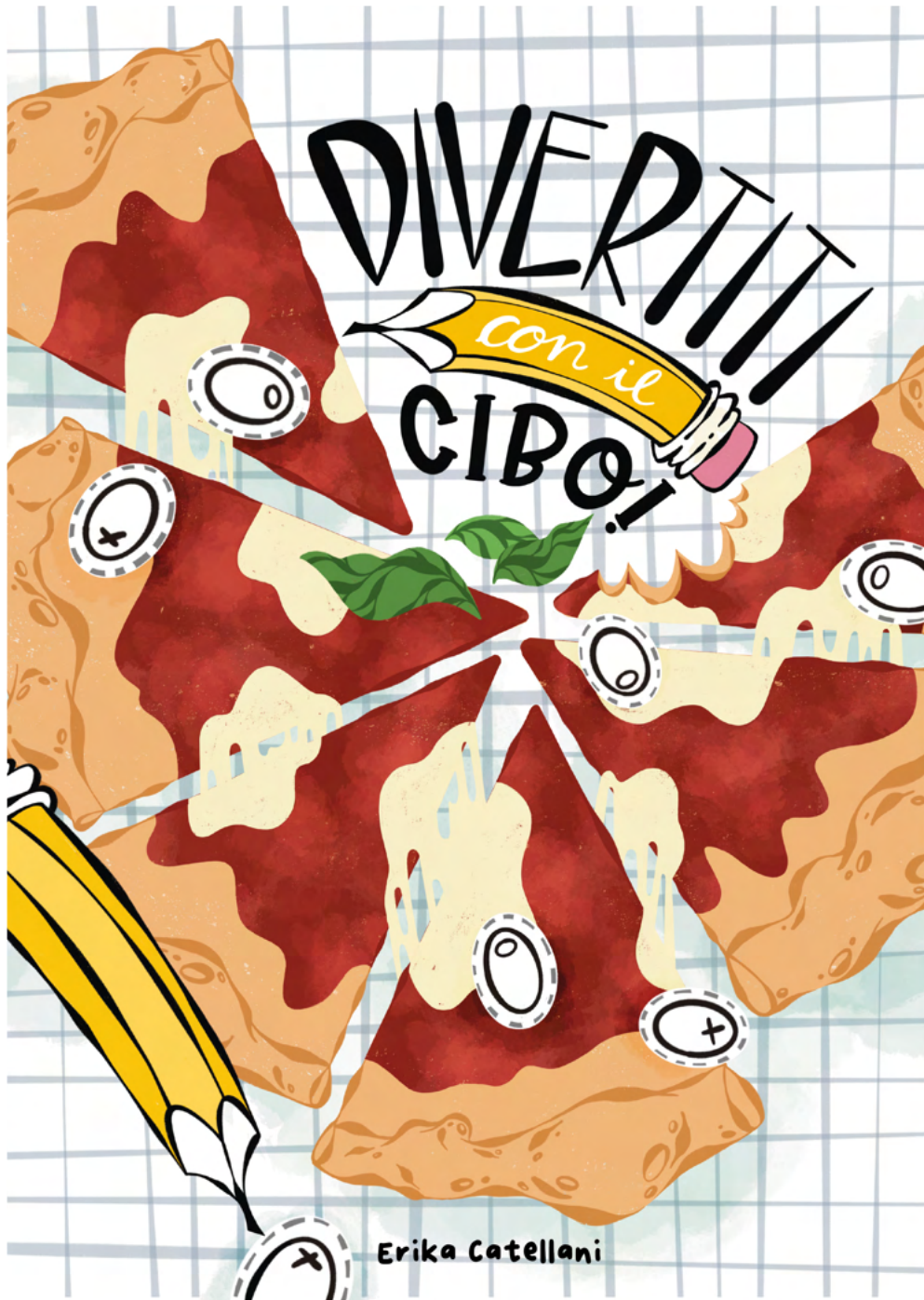
"POLPETTE STELLARI" (STELLAR MEATBALLS)  
DIGITAL ILLUSTRATION



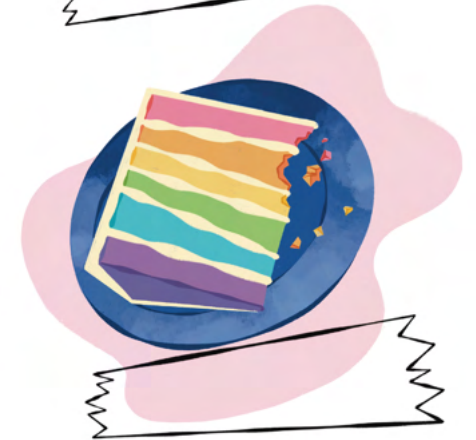




THIS STORY TALKS ABOUT LEXY AND  
HER TWO GREATEST PASSIONS!



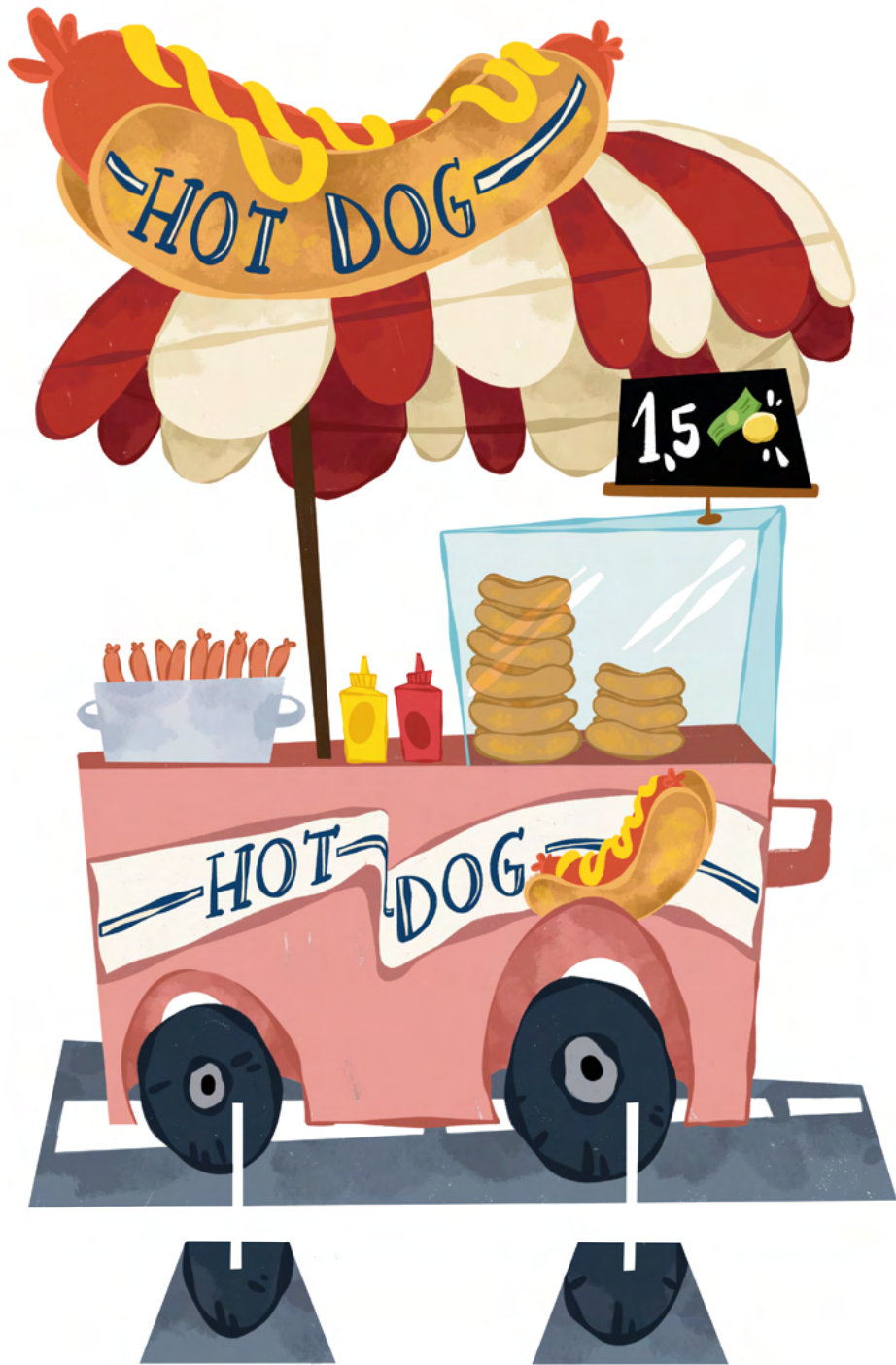
**RICONOSCI QUESTI PIATTI?**





**"DIVERTITI CON IL CIBO" (HAVE FUN WITH FOOD)**  
DIGITAL ILLUSTRATIONS FOR A CHILDREN'S GAME BOOK.

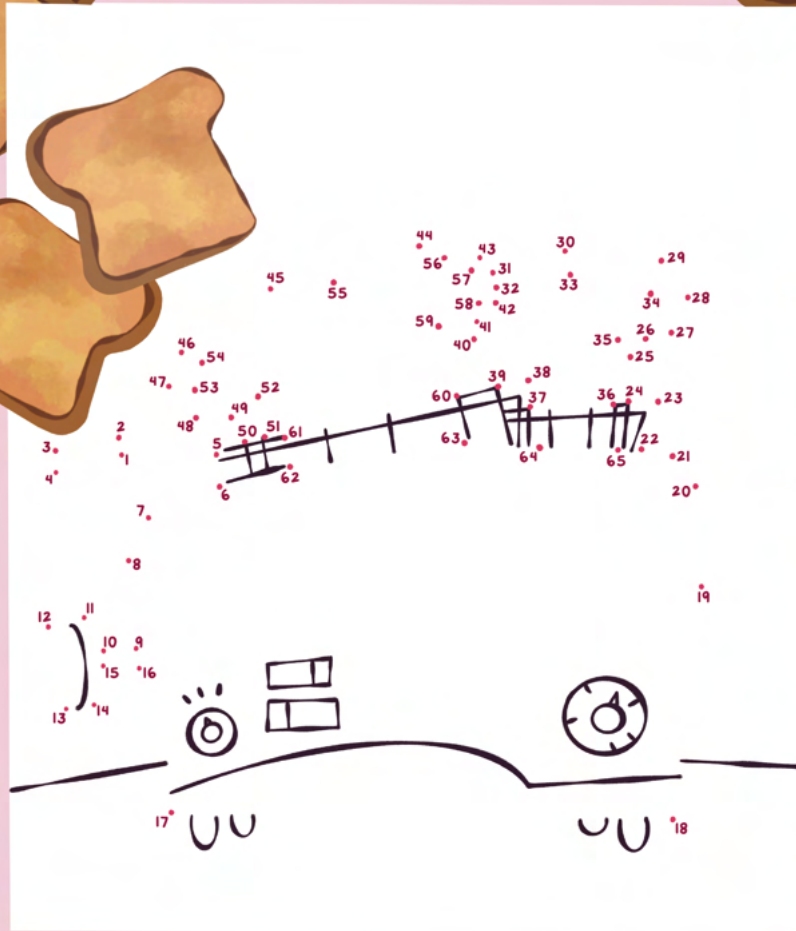




DI COSA SI TRATTA?

.....

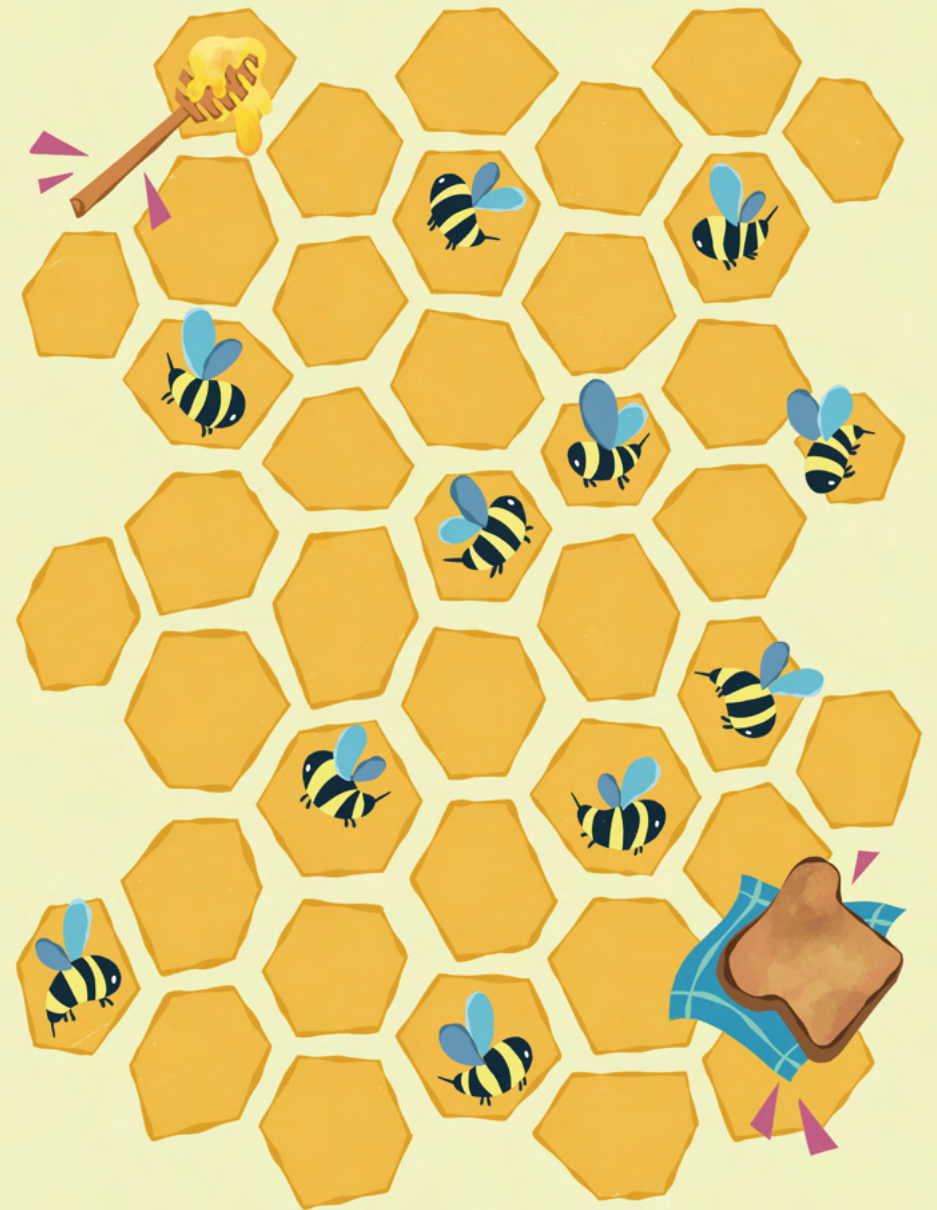
## COLLEGA I PUNTINI



DI COSA SI TRATTA?

.....

## RAGGIUNGI LA FETTA DI PANE EVITANDO LE API







**NURSERY RHYMES,  
DIGITAL ILLUSTRATIONS FOR BOOK COVERS AND INNER PAGES.**



CHARACTER DESIGN  
YOUNG GIRL AND PROFESSOR LIBRIS.







**CHRISTMAS PARTY AND SANTA'S LITTLE ELVES**  
DIGITAL ILLUSTRATIONS FOR GREETING CARDS.



Merry  
\* Christmas! \* \*

ERY  
KAT







GOOD AND EVIL WITCHES  
DIGITAL ILLUSTRATIONS





THE WHALE IN THE FOREST  
DIGITAL ILLUSTRATIONS

# THANK YOU!



ERIKA CATELLANI



346 3634879



[WWW.ERIKACATELLANI.IT](http://WWW.ERIKACATELLANI.IT)



[HELLO@ERIKACATELLANI.IT](mailto:HELLO@ERIKACATELLANI.IT)

\_ERY.KAT\_ 

ERIKA (ERY.KAT) CATELLANI 

ERIKA CATELLANI (ERY.KAT) 

ILLUSTRATIONS MADE BY ERIKA CATELLANI ©

